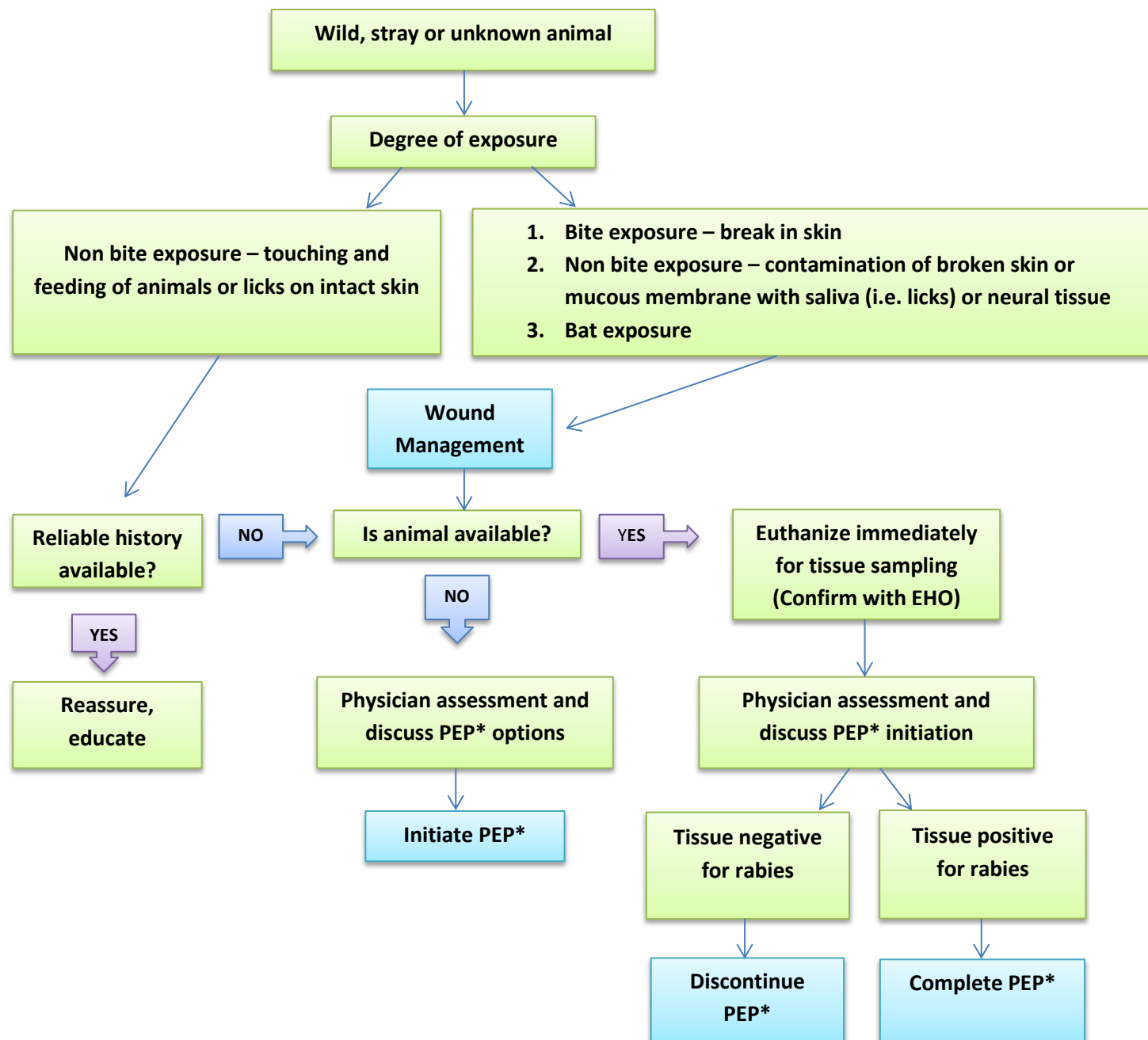


Rabies Exposure Decision Tree – Wild, Stray or Unknown Animals



Stray Dogs

In the event of a dog bite/exposure, every effort will be made to find the owner of the dog to ensure the animal is observed for a 10 day period. If it is determined that the dog does not have an owner (i.e. is a stray animal), the EHO will meet with the appropriate community leadership to discuss options. In this case, the person exposed to the animal will be assessed by a physician for PEP, and the animal will be managed as per the decision tree for a wild animal.

*PEP Post-Exposure Prophylaxis (vaccination and RabIg)