

ComfortSeal* Mask Sizer

Facemask seal is the most important factor in aerosol drug delivery to infants and children.¹ The exclusive **Flow-Vu*** Inhalation Indicator only moves when there is a proper facemask seal.



SMALL



MEDIUM



LARGE



Small



Medium



AC*Girlz*



AC*Boyzz*



Mouthpiece



Large

AeroChamber
Plus **Flow-Vu**

Anti-Static Valved Holding Chamber

www.aerochamber.com

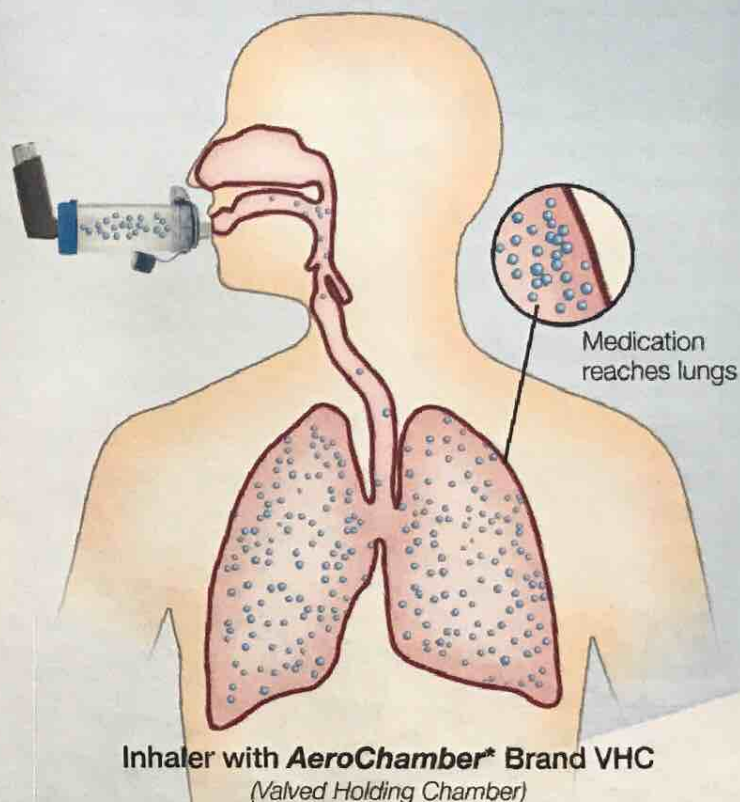
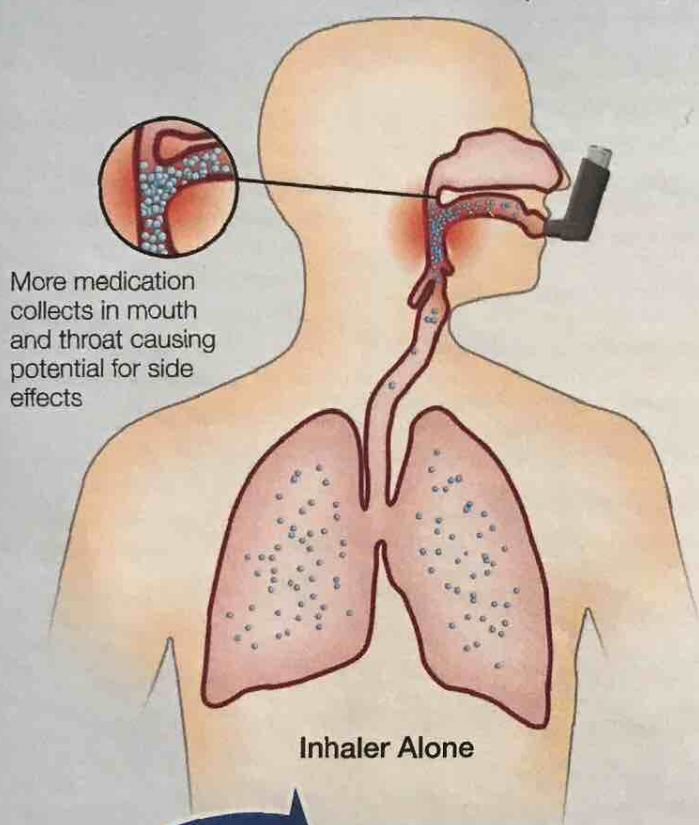
Children should transition to a mouthpiece around the age of 5

¹ Aronow A. Newhouse MT. Review of Optimal Characteristics of Face-Masks for Valved Holding Chambers (VHCs). Pediatric Pulmonology. 43:268-274, 2008. 0893-0100/08/0000-0000\$10.00/0. © 2008 by the American Thoracic Society. All rights reserved. 10/08/08-001



Only 9% of patients use their inhalers correctly.¹

AeroChamber* Brand VHC helps ensure medication is delivered deep in the lungs,² while providing feedback of correct use.



The **Flow-Vu*** Inspiratory Flow Indicator moves as you breathe to help provide assurance that you are using the chamber correctly. The **Flow-Vu*** Indicator is especially useful for caregivers of children as it allows them to count the child's breaths, as well as ensuring that the mask is applied correctly.

AeroChamber
Plus **Flow-Vu***

Anti-Static Valved Holding Chamber



My Asthma Action Plan

Goals of my asthma action plan

- No physical asthma symptoms
- No work or school missed because of asthma
- No emergency visits or hospitalization for asthma
- No restrictions to normal activities
- Minimal use of a reliever inhaler

Knowing my asthma triggers



- ☐ Animal allergens and secretions
- ☐ Colds and infections
- ☐ Dust mites
- ☐ Emotional anxiety and excitement
- ☐ Food allergies
- ☐ Gastroesophageal reflux
- ☐ Hormonal changes
- ☐ Inhaled irritants (Perfume, talcum powder, hair spray, chalk dust, pesticides)
- ☐ Medications
- ☐ Mold
- ☐ Pollen
- ☐ Pollution (ozone, sulfur dioxide, auto exhaust, fire/wood stove smoke)
- ☐ Vigorous exercise
- ☐ Weather (extreme temperatures, windy conditions, changes in humidity/barometric pressure)

My asthma is well controlled

PEAK FLOW 81% TO 100%

I experience **ALL** of the following:

- Breathing is normal
- Sleep through the nights
- Can do all usual activities
- No coughing, wheezing or tightness in the chest

What should I do?

Continue my usual treatment as follows:

My asthma is getting worse

PEAK FLOW 50% TO 80%

I have **ANY** of these symptoms:

- Shortness of breath during the day or night
- Coughing, wheezing or tightness in the chest
- Coughing at night more than 1 night per week
- Can do some but not all usual physical activities
- Using quick relief medicine more than 3 times per week
- First signs of a cold or flu

What should I do?

Increase my usual treatment as follows:

DANGER! Get help now!

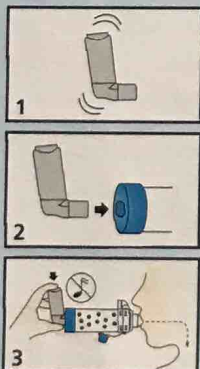
PEAK FLOW LESS THAN 50%

I have **ANY** of these symptoms:

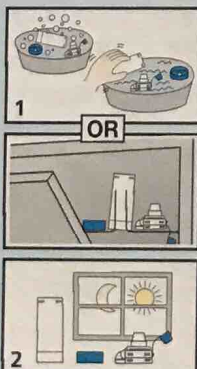
- Shortness of breath at rest
- Medication does not help within 10 minutes
- Difficulty walking or talking
- Sucking in of the skin at the front of the neck
- Lips and/or fingernails turn blue
- IF YOU ARE IN ANY DOUBT...

CALL AN AMBULANCE OR SEEK IMMEDIATE MEDICAL ATTENTION

DIRECTIONS FOR USE



CLEANING INSTRUCTIONS



Measure lung health and peak flow with a **TruZone*** Peak Flow Meter



NEW!
EASY TO USE
patient videos available at
www.aerochamber.com



Trudell Medical International*

725 Third Street, London, Ontario, Canada, N5V 5G4



+1-519-455-7060



+1-519-455-7858



customerservice@trudellmed.com



www.trudellmed.com



1 Plaza V, Sanchis J, CESEA Group. Medical Personnel and Patient Skill in the Use of Metered Dose Inhalers: A Multicentric Study. Respiration 1998; 65:195-198. 2 Salzman GA, et al. Oropharyngeal candidiasis in patients treated with beclomethasone dipropionate delivered by metered-dose inhaler alone and with Aerochamber. J Allergy & Clinical Immunology 1988;81 (2):424-428.
201026-001 Rev B. * trade marks and registered trade marks of Trudell Medical International. Copyright © Trudell Medical International 2010, 2011. All rights reserved.